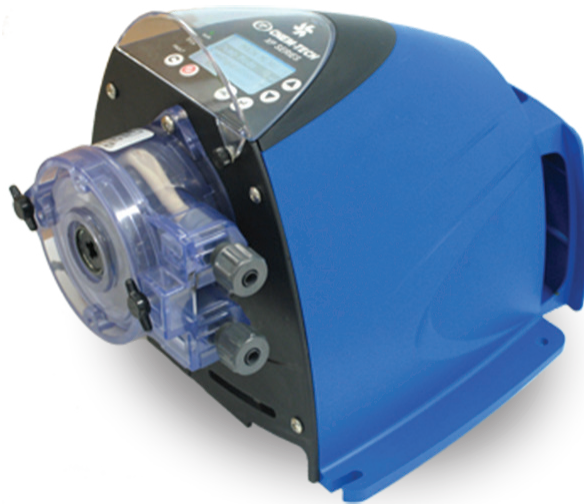


CHEM-TECH SERIES XPV PERISTALTIC METERING PUMPS

The Chem-Tech Series XPV pump combines the best in variable speed peristaltic pump technology with state of the art control electronics, providing unparalleled performance, control, and value. The Series XPV represents the leading edge of microprocessor performance management that allows a variety of choices of input signal types, and onboard timer programs to customize this pump to any application. Of course, this pump is as rugged and reliable as its fixed speed siblings, the XPF and the XPA.



FEATURES

- Variable Speed Motor.
- Fully Scalable 4-20mA Input.
- Hall Effect Input.
- Contacting Head Water Meter Input.
- Flow Totalization. Accurately reports the volume pumped at the touch of a button.
- Five Pump Modes. Fixed Speed, Cycle Timer, Daily Time, Pulse and 4-20mA.
- Cycle Timer. Run automatically at set intervals.
- Daily Timer. Inject chemical based on days of the week.
- Five Relay Output Options. Stop Input, Low or High 4-20 Alarm, Circuit Failure or Pump Running.
- LCD Display. Simple, intuitive program selections and clearly displays operating parameters
- Duplex Head Models. Two pump heads to deliver twice the flow, or the rated flow of two different chemicals simultaneously.
- Tubing Materials. Standard Norprene tube material in Low Pressure ratings - extended tube life, High Pressure ratings - meet demanding system requirements. Fluran tubing - greater chemical resistance: contact Technical Service for compatibility.

BENEFITS

- Reliable metering performance.
- Mixed fluid capable. Inherently degassing.
- Extended tube life.
- Rugged, sealed gear train.
- Easy tube change-out.
- Self priming.
- Chemical resistant materials.
- Simple installation



Intertek
9700150



Intertek
9700150

Tested and Certified by WQA
against NSF/ANSI/CAN 61 & 372.



Chem-Tech Series XP & XPV Pumps.
See www.wqa.org for
certification parameters.

MODEL SELECTION

Model	Flow	Pressure Rating - PSI (BAR)				Tube Size	Motor Speed (RPM)
		Single Head Options			Duplex		
		"H" Tube	"L" Tube	"F" Tube	"L" Tube		
XP008	8 GPD (1.3 LPH)	125 (8.6)	80 (5.5)	60 (4.1)	80 (5.5)	2	65 Max
XP017	17 GPD (2.7 LPH)	110 (7.6)	70 (4.8)	50 (3.4) ¹	70 (4.8)	3	
XP033	33 GPD (5.2 LPH)	100 (5.9)	50 (3.4)	40 (2.8) ²	50 (3.4)	4	
XP055	55 GPD (8.7 LPH)	80 (5.5)	40 (2.8)		40 (2.8)	6	60 Max
XP100	100 GPD (15.8 LPH)		25 (1.7)		25 (1.7)	8	

¹Max flow rate is 15 GPD (2.4 LPH) with Fluran tube.

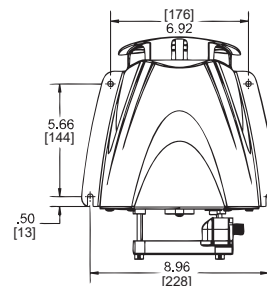
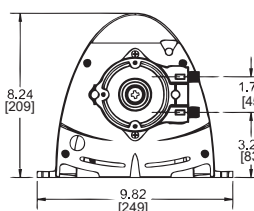
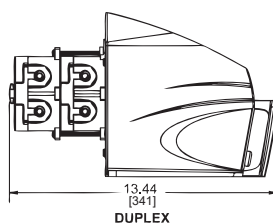
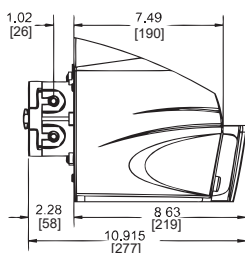
²Max flow rate is 28 GPD (4.4 LPH) with Fluran tube.

ENGINEERING DATA

Drive	Variable Input
	Duplex Head
Tubing	
Norprene Low Pressure	1/4" or 3/8" Tube Fittings
Norprene High Pressure	1/4" or 3/8" Tube Fittings
Fluran	1/4" or 3/8" Tube Fittings (Does not include strainer & Injector accessories)
Viscosity Max CPS	
300 CPS	
Turn- Down Ratio	100:1
Enclosure	NEMA 3R / IP31 (In Horizontal Position)
Power Input	115 VAC/60 HZ
	230 VAC/50/60 HZ*
Temperature Limitations	104°F / 40°C max.
Shipping Weight	8 lbs. / 3.63kg.
Approvals	Conforms to ANSI/NSF STD. 50 Equipment for swimming pools, spas, hot tubs, and other recreational water facilities.

*50 HZ:Rated for intermittent duty only. Continuous duty is not recommended.

DIMENSIONS All dimensions are in inches



27101 Airport Road
Punta Gorda, FL 33982
Tel: (941) 575-3800
Fax: (941) 575-4085
www.pulsatron.com



An ISO Certified Company

IBEX
CTI010 F21