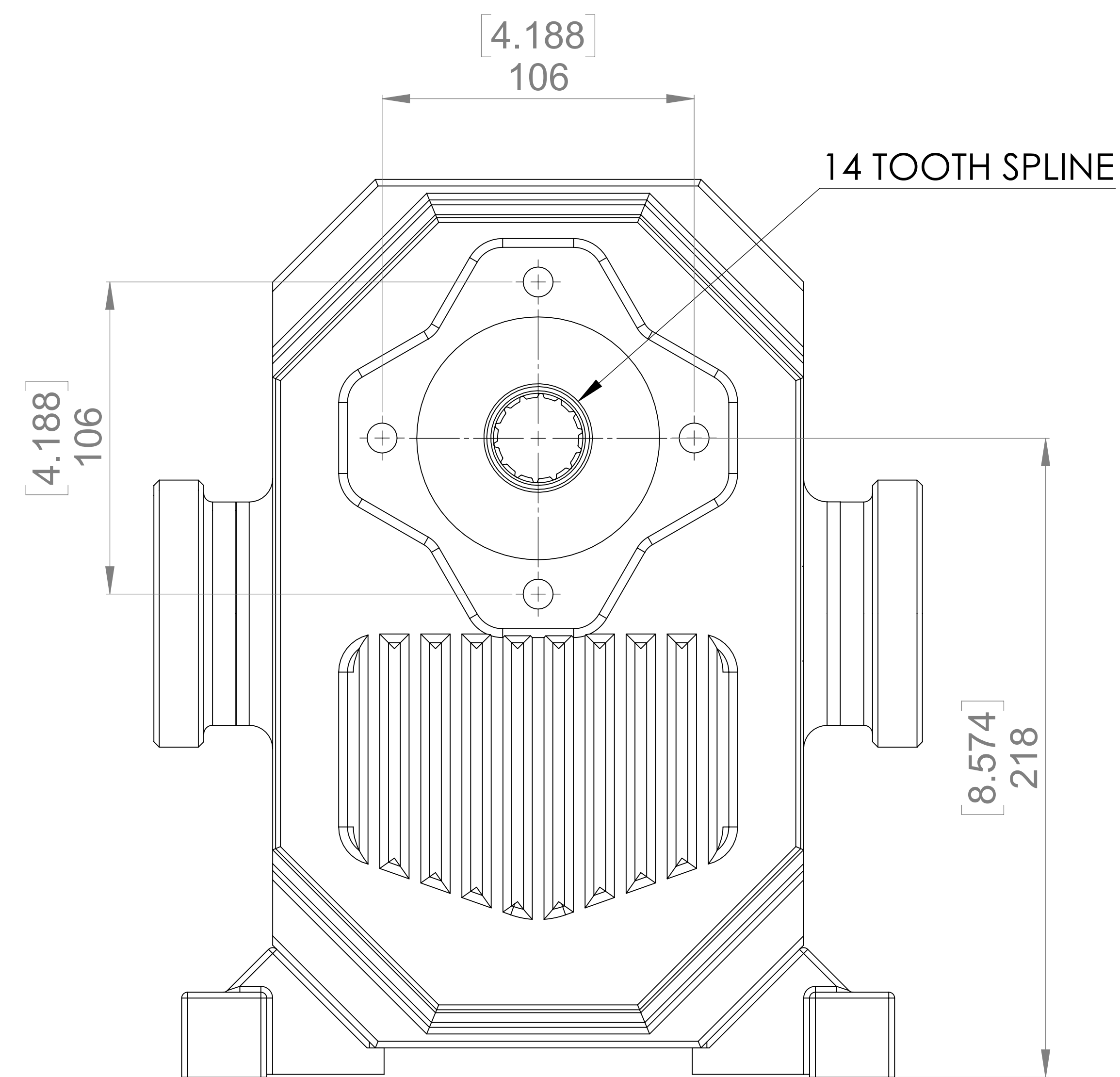
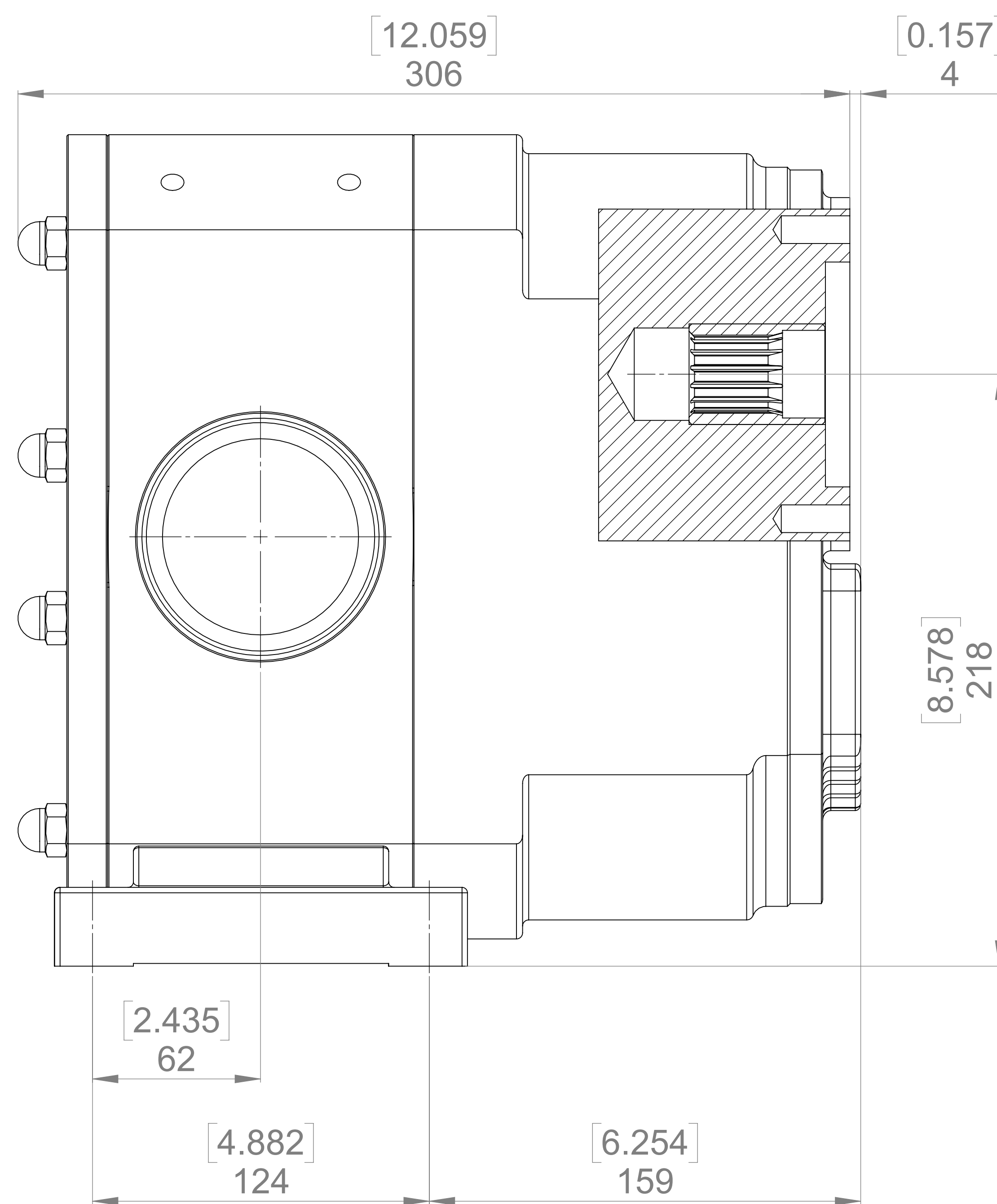
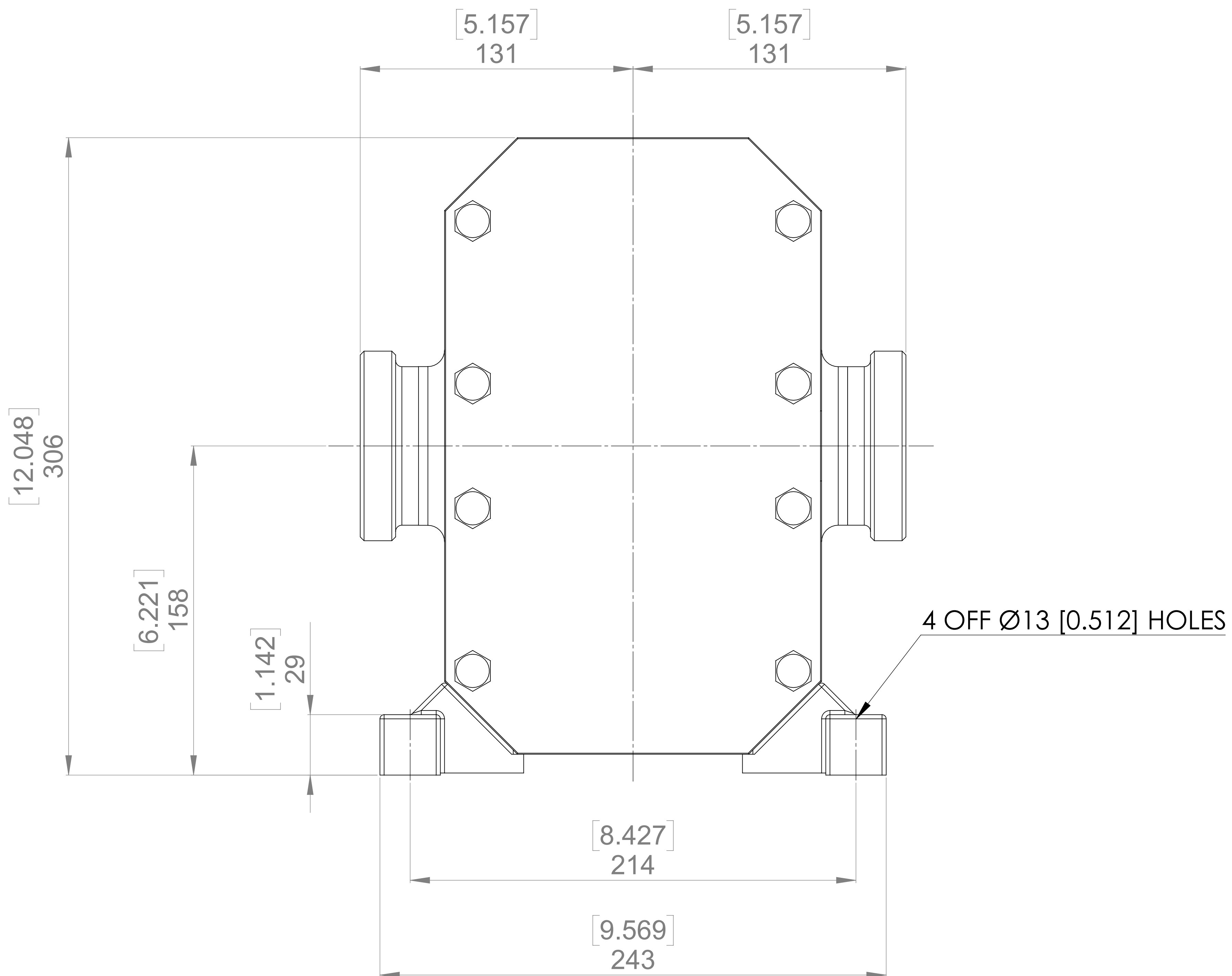
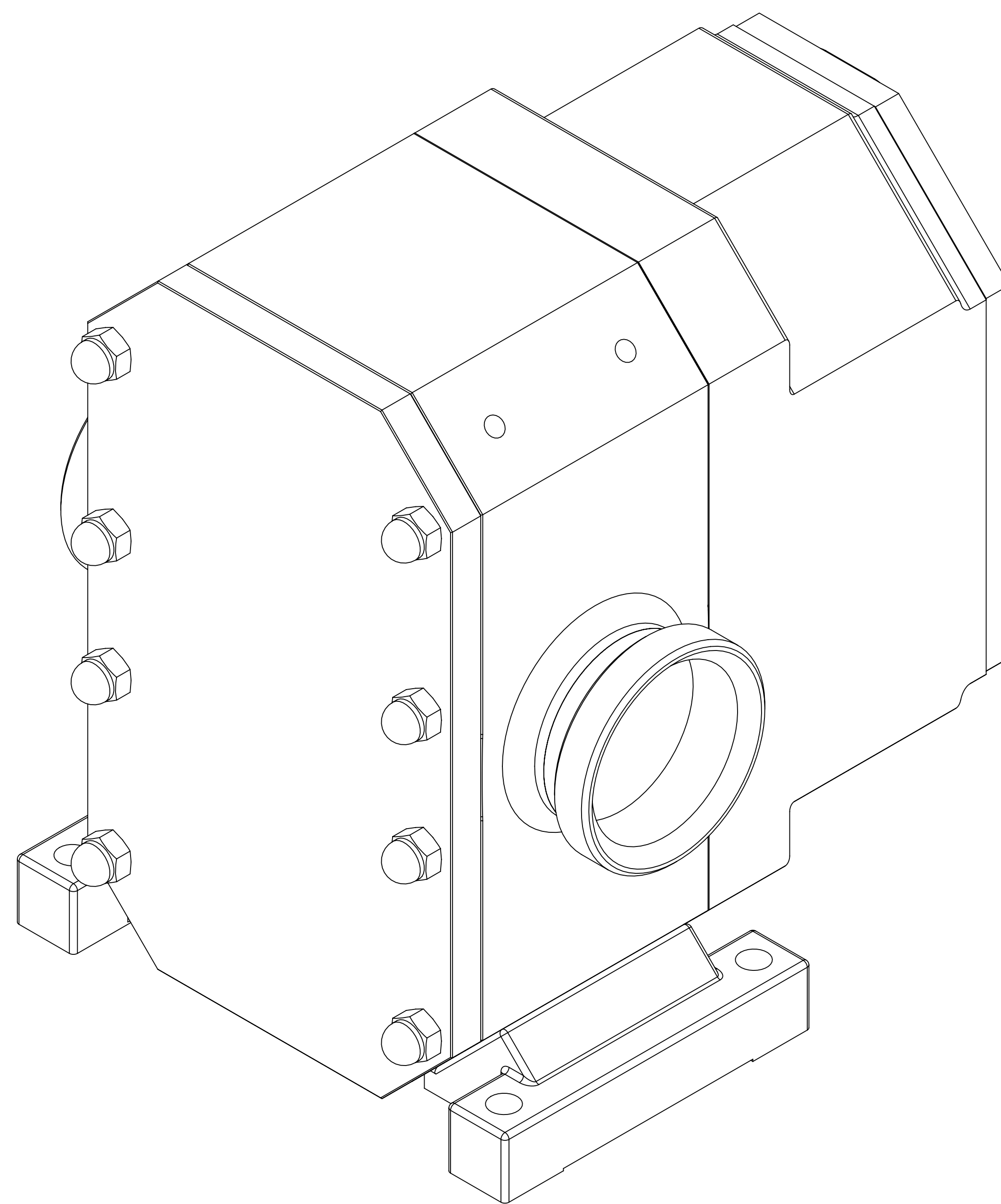


**GENERAL ARRANGEMENT DETAILS**

**PUMP INFORMATION**

PUMP MODEL	RTP30/0128
LEFT/TOP CONNECTION	3" BEVEL/ACME/IAMD
RIGHT/BOTTOM CONNECTION	3" BEVEL/ACME/IAMD
DRIVE SHAFT POSITION	TOP SHAFT DRIVE
FRONT COVER ADDITIONS	NONE
ROTORCASE ADDITIONS	NONE
GEARBOX ADDITIONS	NONE
PUMP ADDITIONS	NONE

THIS IS NOT A CERTIFIED DRAWING, USE FOR GENERAL INSTALLATION ONLY



ISSUED	A	26/02/2024
AMENDMENT	ISSUE	DATE

<p><b>VIKING PUMP</b> HYGIENIC</p> <p>HIGHFIELD INDUSTRIAL ESTATE, EASTBOURNE, EAST SUSSEX, BN23 6PT TEL: (+44) 1323 509211</p>	<p><b>COPYRIGHT:</b> THIS DRAWING IS THE SOLE PROPERTY OF <b>VIKING PUMP HYGIENIC LTD.</b> IT MUST NOT BE COPIED OR USED IN PART OR FULL WITHOUT PRIOR WRITTEN CONSENT.</p>	<p>UNLESS OTHERWISE STATED: ALL DIMENSIONS ± 2.50 ANGLES ± 2.0° DO NOT SCALE THIS DRAWING REMOVE BURRS AND SHARP EDGES DIMENSIONS IN MILLIMETRES <b>IF IN DOUBT ASK</b></p>	PROJECTION	DRAWN	CHECKED	TITLE:
				TJV	MEW	DRG. NO: