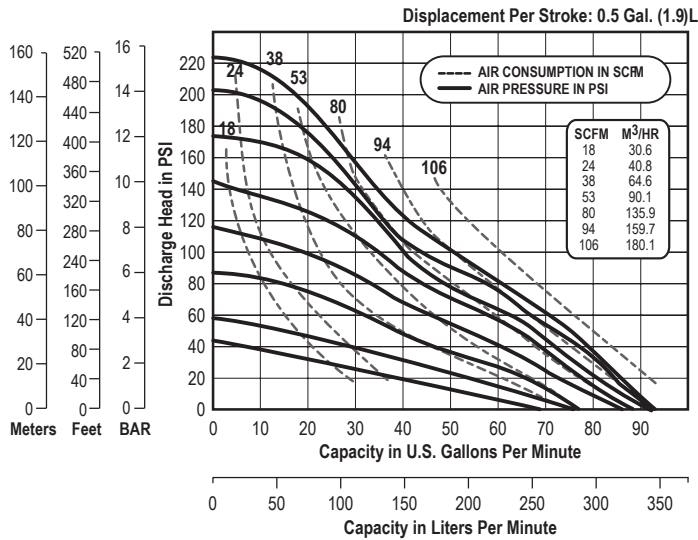


# N50 DATA SHEET

## SPECIFICATIONS & PERFORMANCE

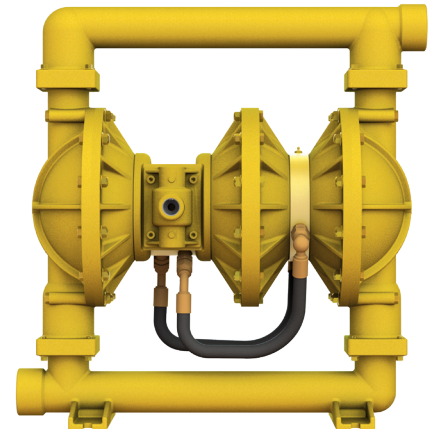
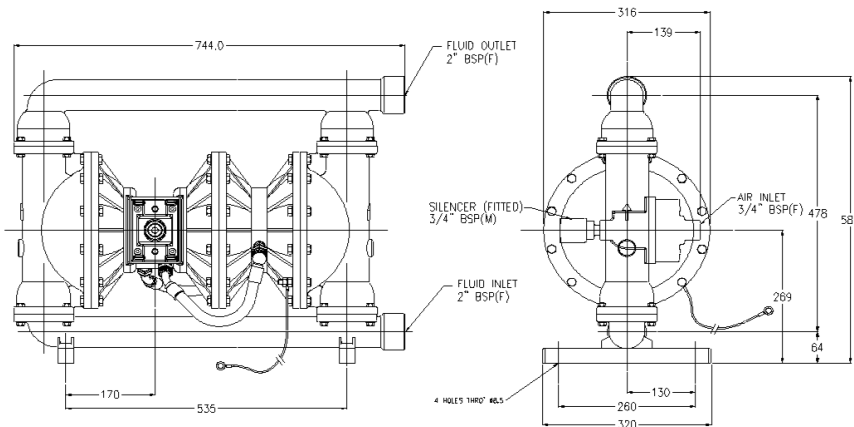
# N50 2" Full Flow High Pressure Pumps

### PERFORMANCE



NOTE: Performance based on the following: elastomeric fitted pump, flooded suction, water at ambient conditions. The use of other materials and varying hydraulic conditions may result in deviations in excess of 5%.

### DIMENSIONS



### SPECIFICATIONS

#### Flow Rate

Adjustable to . . . . . 0-90 gpm (341 lpm)

#### Port Size

Suction . . . . . 2.0" NPTF

Discharge . . . . . 2.0" NPTF

**Air Inlet** . . . . . 3/4" NPT

**Air Exhaust** . . . . . 3/4" BSP

#### Suction Lift

Dry . . . . . 20' (6.09 m)

Wet . . . . . 25' (7.62 m)

#### Max Solid Size (Diameter)

. . . . . 0.25"(6mm)

#### Shipping Weights

Aluminum . . . . . 147 lbs (67kg)

Stainless Steel . . . . . 165 lbs (75 kg)



# VERSAMATIC®

Warren Rupp, Inc. | A Unit of IDEX Corporation  
 800 North Main Street | Mansfield, OH 44902 USA  
 Phone: 419.526.7296 | Fax: 419.526.7289

[VERSAMATIC.COM](http://VERSAMATIC.COM)

n50-rev0519

©Copyright 2019 Warren Rupp, Inc. All Rights Reserved.