

# **PULSAtron E+ RC**

## **DIAPHRAGM METERING PUMPS**

*SIMPLE, RELIABLE AND SAFE.*

# E+ RATIO CONTROL MEDICATE AND GROW



Built on the proven PULSAtron Series pump platform, E+ Ratio Control (RC) offers manual control over stroke length, automatic speed control based on a water meter input signal and a selectable ratio control from 0.1 Oz/ Gallon to 1.0 Oz/ Gallon.

Three models are available, having pressure capabilities to 100 PSIG (7 BAR) and flow capabilities from 44 GPD (7 LPH) to 120 GPD (18.9 LPH). PULSAtron Series is designed for very precise dosing of liquids having a reproducibility within  $\pm 2\%$  of maximum capacity. The RC Series is ideal for Medicator applications to accurately dose nutritional supplements to enhance the live stocks health.

PULSAtron Series is powered by Solenoid Technology that provides a long life and dosing accuracy over the life of the pump. KOPKit (keep on pumping) kit is used for ease of maintenance and with the QR code provides videos for start up support and changing out the spare parts kit.

The PULSAtron RC Series can also be utilized to accurately dose Sodium Hypochlorite for livestock and poultry feed water and disinfection. Auto-degassing liquid end allows the pump to be self-priming.

RC Series can meet the needs for other water treatment applications including well water, closed loop systems, water meter activated chemical feed applications, and many others.



## CONTROLS

### AUTOMATIC STROKE RATE

- Adjustment range 0.1 to 1.0 Oz/Gallon

### MANUAL STROKE LENGTH

- Turn-Down Ratio 10:1

### WATER METER PULSE PER GALLON SETTING

- 1PPG, 2PPG, 4PPG & 10PPG

### WATER OUTPUT SIGNAL

Duplicates the water meter input signal for pacing other pumps or use as a water meter output signal to controller.





# ADVANCED FEATURES AND FUNCTIONS FOR HEALTHY ANIMALS

## CONTROLS AND MODES



### CONTROLS

- Automatic control, pump speed is automatically adjusted to maintain the ratio that is set.
- Manual control by on-line adjustable stroke length.

### MODES

- Prime mode allows the pump to operate at 100% speed.
- Standby mode allows the pump to be stopped and act as a water meter signal repeater.



## GUIDED BALL CHECK SYSTEM

Reduce back flow and enhance outstanding priming characteristics.

- Leak-free, sealless, liquid end.
- High viscosity capability.



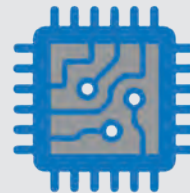
## SAFE AND EASY PRIMING

Durable leak-free bleed valve assembly which comes standard on PULSAtern E+ Ratio Control RC, makes priming your pump simple as turning a dial and keeps you safely away from chemicals.



## INDICATOR LIGHTS

Indicator lights for pump stroke and water meter input, so you know which function is activated.



## SOLENOID PROTECTION

Solenoid protected by thermal overload with auto-rest and panel mounted fuse, reduces electronic upsets.

- Rated “hot” for continuous duty.
- Water Resistant for outdoor and indoor applications.

RPE4									MAX. FLOW RATE: 1.85 gph / 44 gpd (7.0 lph) MAX PRESSURE: 100 PSI (7 BAR)		
Model Number	NSF61	Controls	Voltage	Head Fittings	Seats / O-Rings	Balls	Max. Water flow @ 1 Oz/Gallon dose				
							@ 70 PSI (5.5 BAR)	@ 50 PSI (3.4 BAR)			
RPE4EA-VTC1-XXX		Ratio Control	115 V	PVC	TFE	CER	4.0 GPM / 15.1 LPM	5.0 GPM / 18.9 LPM			
RPE4EA-PTC1-XXX		Ratio Control	115 V	GFPPL	TFE	CER					
RPE4EA-KTC1-XXX	√	Ratio Control	115 V	PVDF	TFE	CER					
RPG5									MAX. FLOW RATE: 4.00 gph / 96 gpd (15.1 lph) MAX PRESSURE: 100 PSI (7 BAR)		
Model Number	NSF61	Controls	Voltage	Head Fittings	Seats / O-Rings	Balls	Max. Water flow @ 1 Oz/Gallon dose				
							@ 70 PSI (5.5 BAR)	@ 50 PSI (3.4 BAR)			
RPG5EA-VTCH-XXX		Ratio Control	115 V	PVC	TFE	CER	8.5 GPM / 32.2 LPM	9.0 GPM / 32.2 LPM			
RPG5EA-PTCH-XXX		Ratio Control	115 V	GFPPL	TFE	CER					
RPG5EA-KTCH-XXX	√	Ratio Control	115 V	PVDF	TFE	CER					
RPH6									MAX. FLOW RATE: 5.00 gph / 120 gpd (18.9 lph) MAX PRESSURE: 100 PSI (7 BAR)		
Model Number	NSF61	Controls	Voltage	Head Fittings	Seats / O-Rings	Balls	Max. Water flow @ 1 Oz/Gallon dose				
							@ 70 PSI (5.5 BAR)	@ 50 PSI (3.4 BAR)			
RPH6EA-VTCH-XXX		Ratio Control	115 V	PVC	TFE	CER	10.0 GPM / 37.9 LPM	14.0 GPM / 53.0 LPM			
RPH6EA-PTCH-XXX		Ratio Control	115 V	GFPPL	TFE	CER					
RPH6EA-KTCH-XXX	√	Ratio Control	115 V	PVDF	TFE	CER					

# FROM WELL TO CHEMICAL



## PULSATRON THE INDUSTRY STANDARD AND NOW E+ RC IS READY TO OUTPERFORM

Pulsafeeder PULSAtron diaphragm metering pumps are known as the industry standard for precisely dosing chemicals into water treatment processes. The large range of flows and pressures with the standard features and benefits allows the PULSAtron metering pumps to be your solution for a wide range of water treatment applications.



**PULSAFEEDER®**

27101 AIRPORT ROAD • PUNTA GORDA, FL 33982

PH: 941.575.3800 • FAX: 941.575.4085

PULSATRON.COM

**IDEX**

AN ISO 9001 CERTIFIED COMPANY